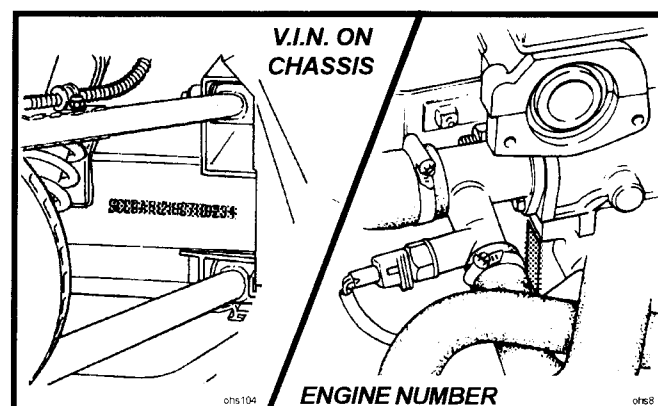
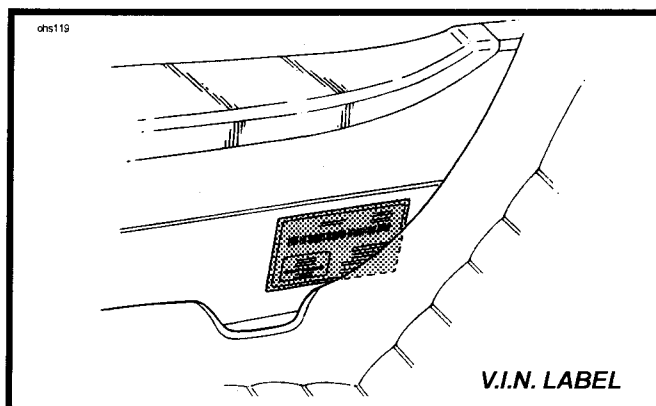
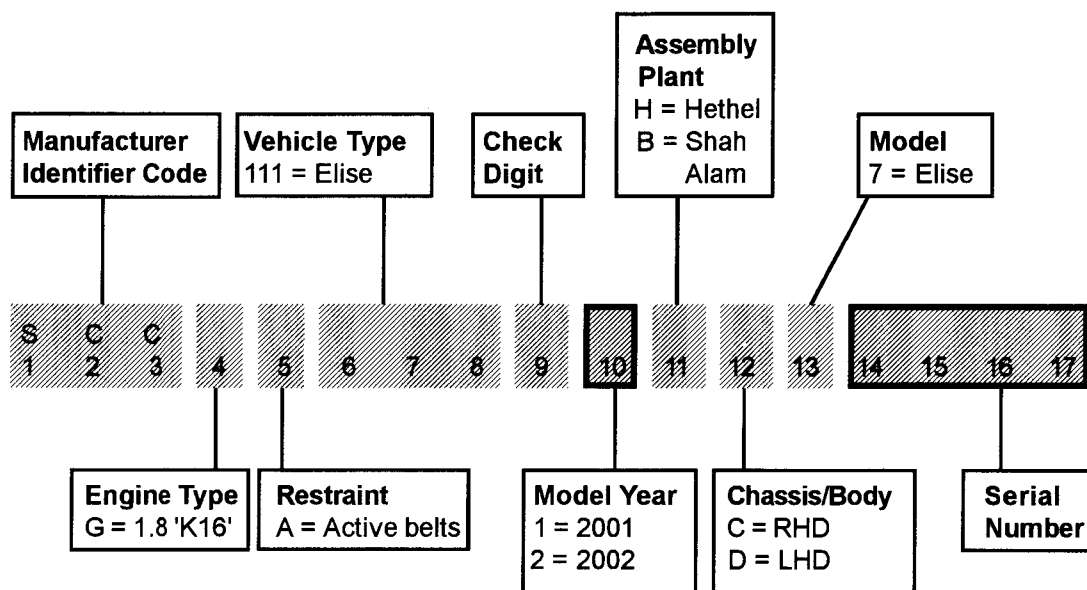


## VEHICLE IDENTIFICATION NUMBER & ENGINE NUMBER

The Vehicle Identification Number (V.I.N.) is stamped on the chassis in the right hand rear sill area, and is also printed on a label stuck to the body in the front services compartment. The engine number is marked on a vertical patch at the left hand end of the forward face of the cylinder block, and is most easily viewed using a mirror.

Both numbers should always be quoted with any vehicle enquiries, as Factory records are filed against V.I.N., and specification change points are identified by V.I.N. or engine number. The vehicle licence number may not accurately reflect vehicle age, may also be changed during the car's life, and is an unreliable method of vehicle identification.

The V.I.N. comprises 17 characters, coded in accordance with European Economic Community (EEC) directives. For change point identification in Service Notes and Service Parts Lists, characters 10 (model year) and 15 - 17, or 14 - 17 (serial number) will be quoted.



ELISE



# Service Parts List **ELISE**



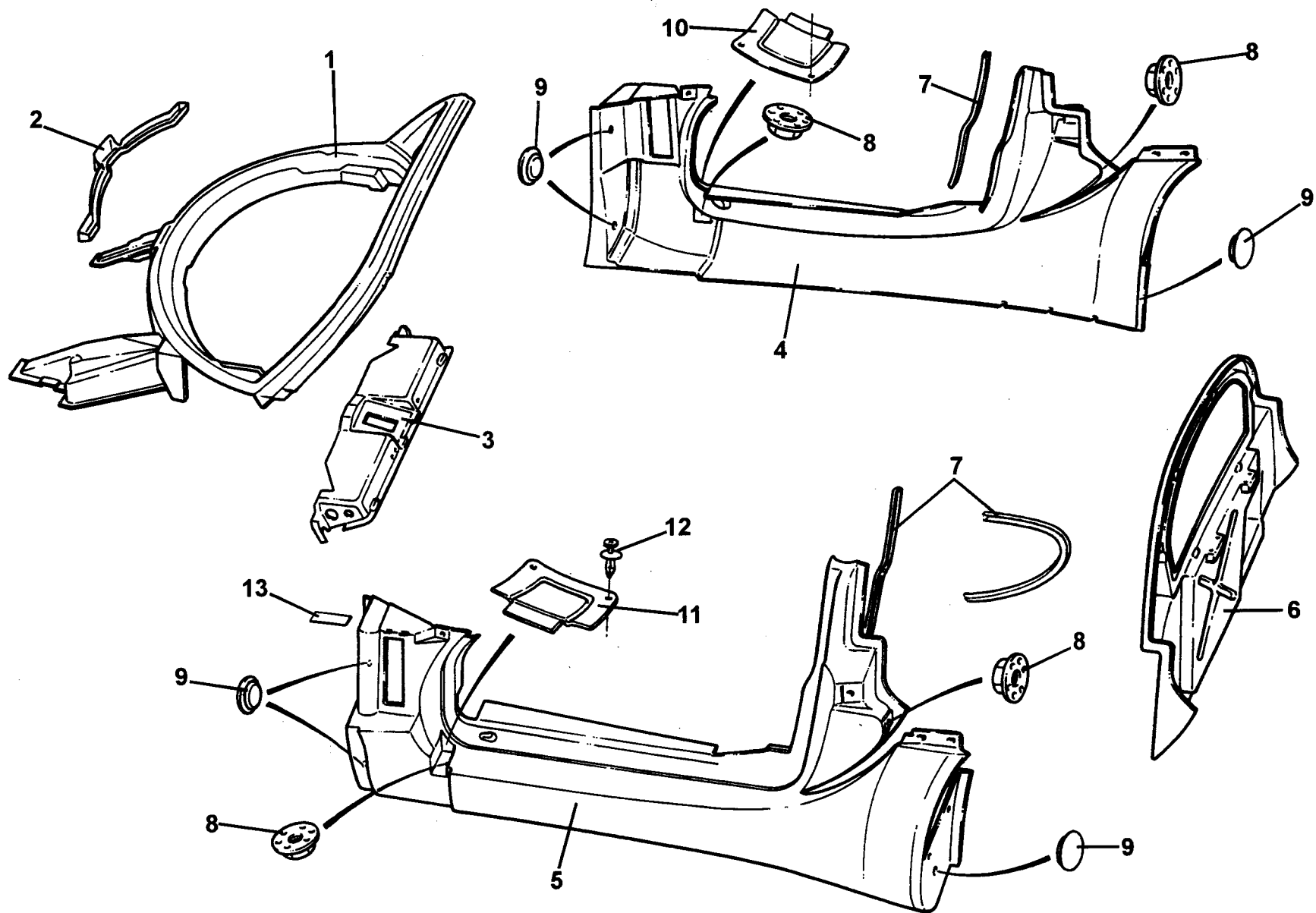
## Function Code 10.01 Front & Rear Clamshells & Fixings

<u>Dep</u>	<u>Part Description</u>	<u>Remarks</u>	<u>Option</u>	<u>Part Number</u>	<u>Qty</u>
01	Front Clamshell			A117B0003K	1
02	Rear Clamshell			A117B0017K	1
03	Door Hinge Cover Panel, RH			A117B0220K	1
04	Door Hinge Cover Panel, LH			A117B0219K	1
05	Screw, M8 x 25, S/S, button hd.			A111W7175F	6
06	Washer, flat, S/S, M8 x 21 x 1.6			A111W4176F	8
07	Bracket, centre front clamshell	Part of clamshell assy.		C117B0193F	1
08	Screw, M6 x 16, hex. hd.			A075W1028Z	22
09	Washer, flat, M6 x 18 x 1			B082W4018F	22
10	Spirenut, M6			B100W6372F	3
11	Nut, M6			A075W3020Z	2
12	Washer, spring, M6			A075W4035F	2
13	Height Adjuster/Outer Fixing, front access panels			A117B0334F	2
14	Locknut, M10, height adjuster fix.			A075W3024Z	4
15	Washer, flat, M10 x 24 x 1.5, adjuster to clamshell			A075W4023F	2
16	Bracket, front clamshell	Part of clamshell assy.		B117B0163F	2
17	Pad, front clamshell mounting	Not illustrated, on radiator housing		A117U0163F	2
18	Drain Tube, headlamp	Not illustrated		A117M6030F	2

**ELISE**

Function Code: 10.01, Page: 1

2001 / 01



**ELISE**

**10.02a**

# Service Parts List **ELISE**



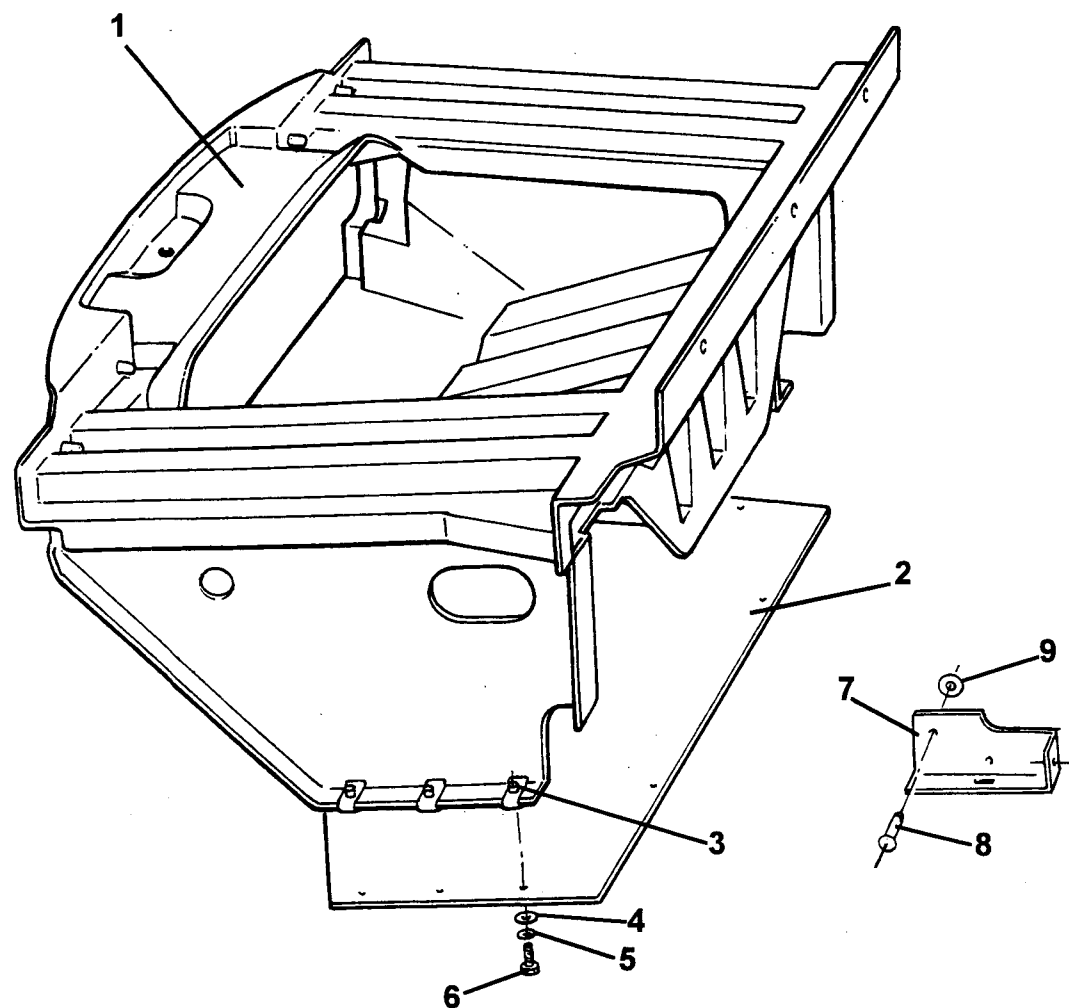
## Function Code 10.02a Body: Sill Panels, Windscreen Frame & Rear Bulkhead

<u>Dep</u>	<u>Part Description</u>	<u>Remarks</u>	<u>Option</u>	<u>Part Number</u>	<u>Qty</u>
01	Windscreen Frame Assembly		Painted	A116B0148K	1
02	Gutter, windscreen frame			A117B0153F	1
03	Baffle, scuttle to fascia top			A116B0195J	1
04	Sill Panel, RH			A117B0030K	1
05	Sill Panel, LH			A117B0031K	1
06	Rear Bulkhead Assembly			B117U0041F	1
07	Edge Finisher, 'B' post/side intake	Cut to fit		A111U6034V	As req.
08	Captive Nut, M8, big hd.			A111W6592F	18
09	Blanking Grommet, 12.5mm			A100B6163F	1
10	Finisher Panel, front sill recess, RH			A117U0168F	1
11	Finisher Panel, front sill recess, LH			A117U0169F	1
12	Plastic Fastener, panel fix.			A100W6479F	4
13	Pad, hole blanking, upper hinge fixings			A117U0258F	2
14	NVH Foam, sill front	Not illustrated		B117B0034F	2

**ELISE**

2001 / 01

Function Code: 10.02a, Page: 1



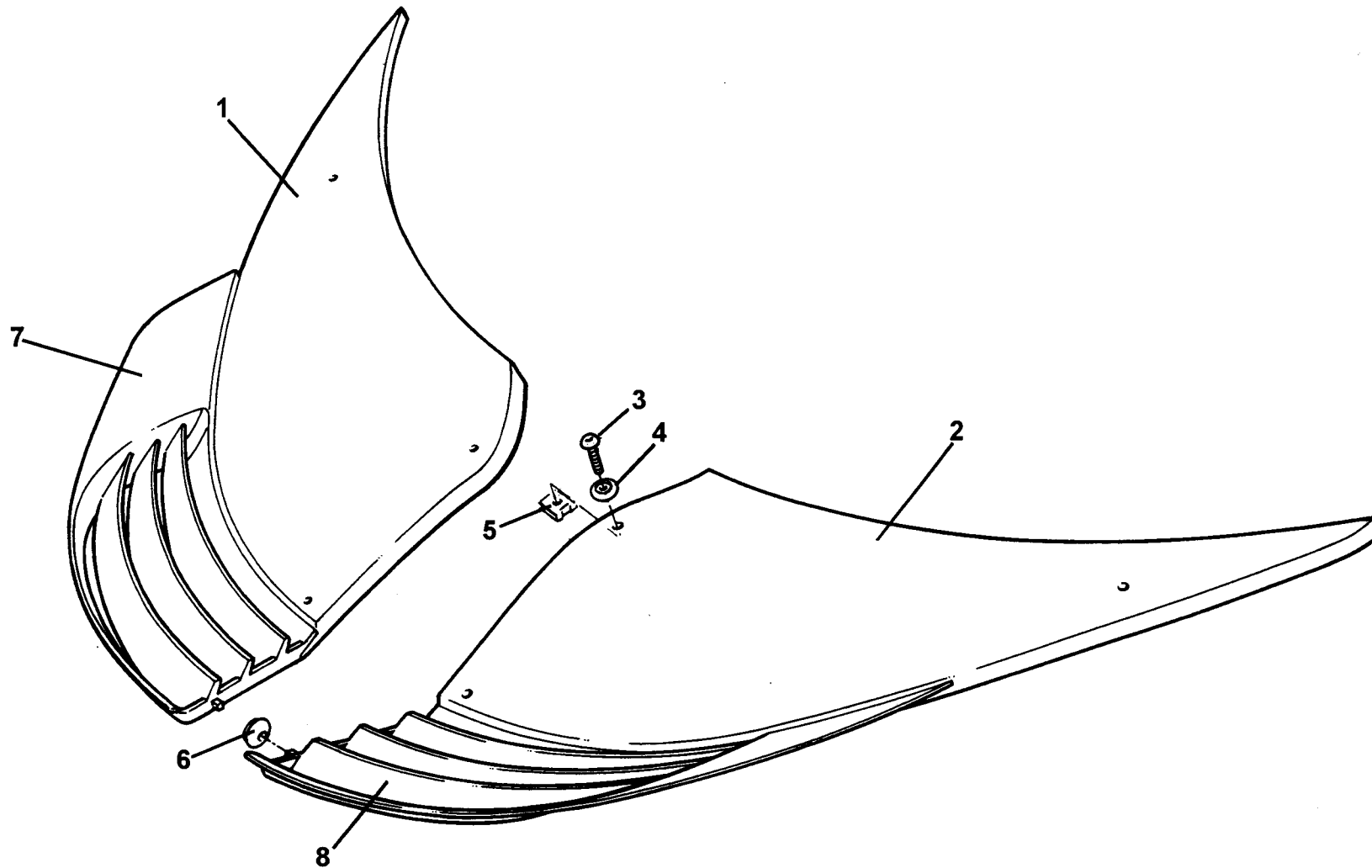
**ELISE**  
10.04

# Service Parts List **ELISE**



## Function Code 10.04 Crash Structures

<u>Dep</u>	<u>Part Description</u>	<u>Remarks</u>	<u>Option</u>	<u>Part Number</u>	<u>Qty</u>
01	Front Crash Structure Assembly			B116B0225K	1
02	Panel, front undershield			B117B0237F	1
03	Spirenut, M6, undershield fix			B100W6372F	6
04	Screw, M6 x 25, pozi., undershield fix			A075W5089Z	9
05	Washer, spring, M6, undershield fix			A075W4035Z	9
06	Washer, flat, M6 x 15 x 1.5, undershield fix			A075W4015Z	9
07	Alloy Plate. LH			A111B0531F	1
07a	Alloy Plate, RH			A111B0530F	1
08	Pop Rivet, plate fix.			A085W6259F	6
09	Washer, flat, 3/16" x 1/2", plate to crash structure			A075W4000Z	4
12	Betaseal 1701, crash structure bonding	Not illustrated		A082B6281F	300mm



**ELISE**  
10.09a

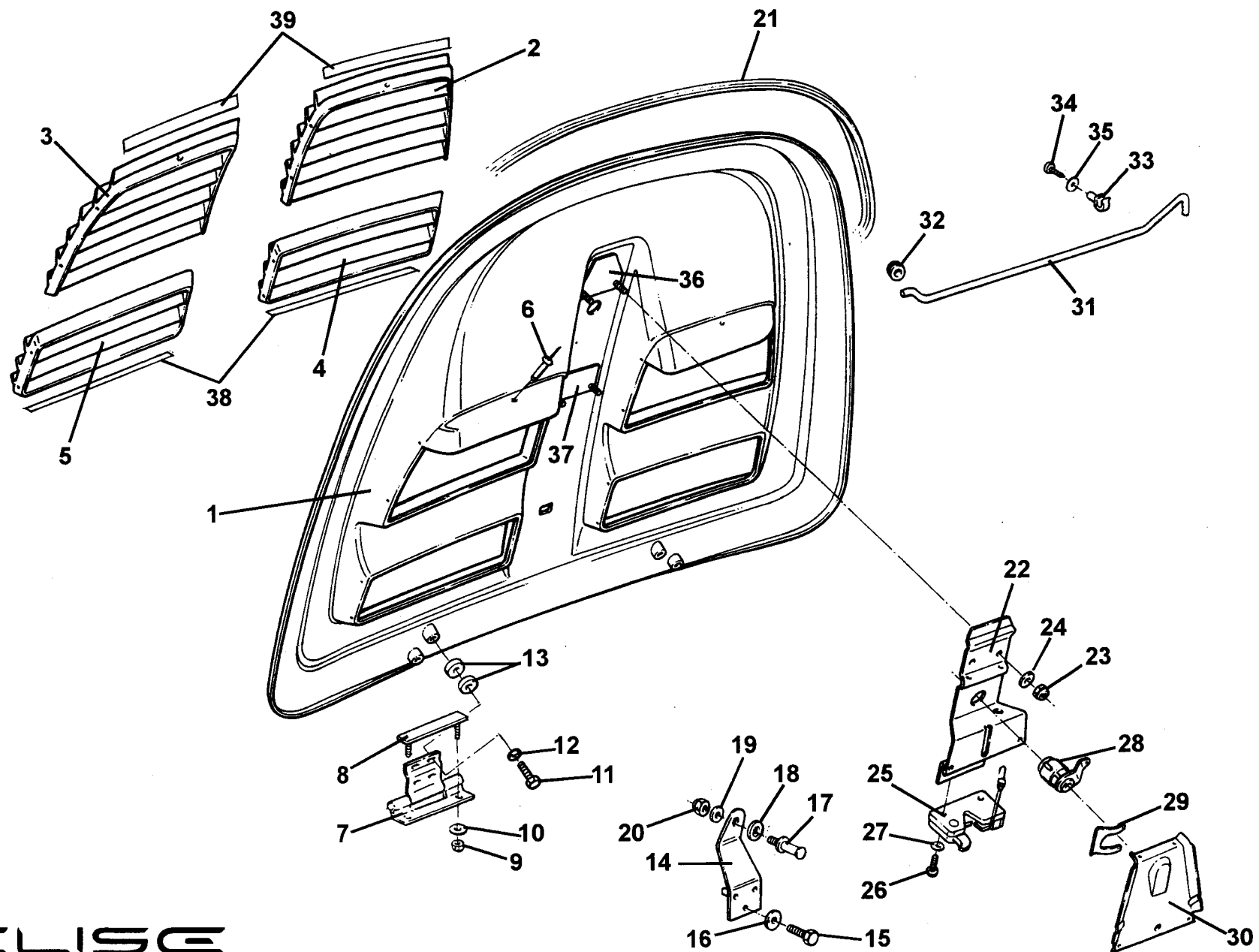


# Service Parts List **ELISE**



## Function Code 10.09a Front Services Access Panels

<u>Dep</u>	<u>Part Description</u>	<u>Remarks</u>	<u>Option</u>	<u>Part Number</u>	<u>Qty</u>
01	Access Panel, front services, RH			B117B0266J	1
02	Access Panel, front services, LH			B117B0267J	1
03	Screw, M5 x 20, button. skt. hd., panel fix.			A082W7173F	6
04	Escutcheon, screw to panel			B340B0123F	6
05	Spire Nut, M5			A117W6682F	4
06	Grommet, panel spigot retaining			X036B6010Z	2
07	Grille, front access panel, RH			C117B0122F	1
08	Grille, front access panel, LH			C117B0121F	1



**ELISE**  
10.11

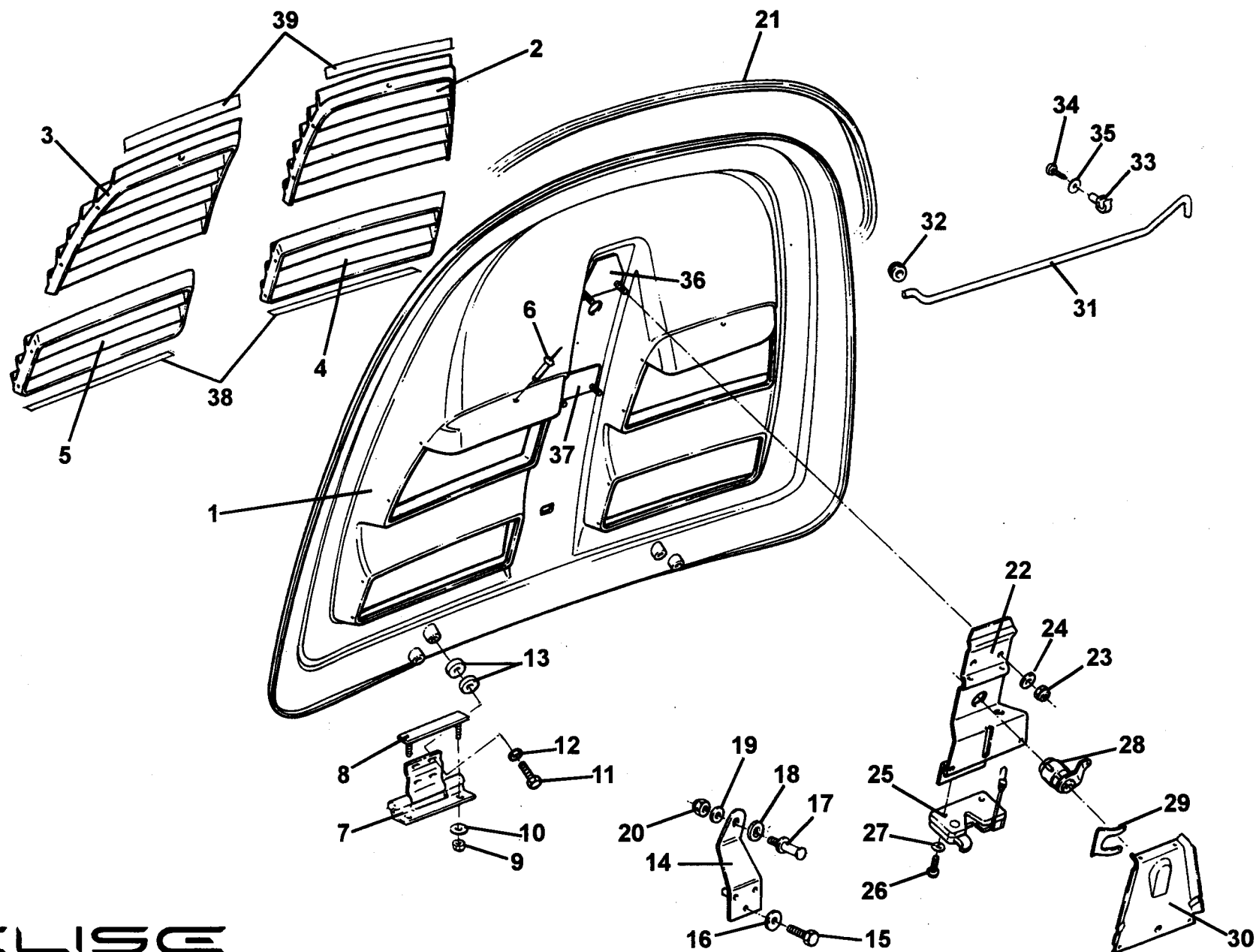
# Service Parts List **ELISE**



## Function Code 10.11 Engine Cover Lid & Latch Mechanism

<u>Dep</u>	<u>Part Description</u>	<u>Remarks</u>	<u>Option</u>	<u>Part Number</u>	<u>Qty</u>
01	Engine Cover Lid			A117B0057K	1
02	Grille, outlet, RH rear			C117B0218F	1
03	Grille, outlet, LH rear			C117B0217F	1
04	Grille, outlet, RH front			C117B0130F	1
05	Grille, outlet, LH front			C117B0129F	1
06	Pop Rivet, plastic, rear grilles to lid			A082W6528F	16
07	Hinge assembly			C117B6002F	2
08	Stud Plate, hinge retention			A117B0236F	2
09	Nyloc Nut, M6, hinge to stud plate			A907E6285F	4
10	Washer, flat, M6 x 25			B075W4017Z	4
11	Screw, M6 x 16, hex. hd., hinge to lid			A075W1028F	4
12	Washer, flat, M6 x 15 x 3			A075W4014Z	4
13	Washer, spacer, M8 x 20 x 2.5			A079W4019F	8
14	Bracket, striker pin			A117B0222F	1
15	Screw, M6 x 20, hex.hd., bracket to bulkhead			A075W1030Z	3
16	Washer, flat, M6 x 18			B082W4018F	3
17	Striker Pin			A117B0223F	1
18	Washer, flat, M10 x 20.5 x 1.8			A075W4024Z	

**ELISE**

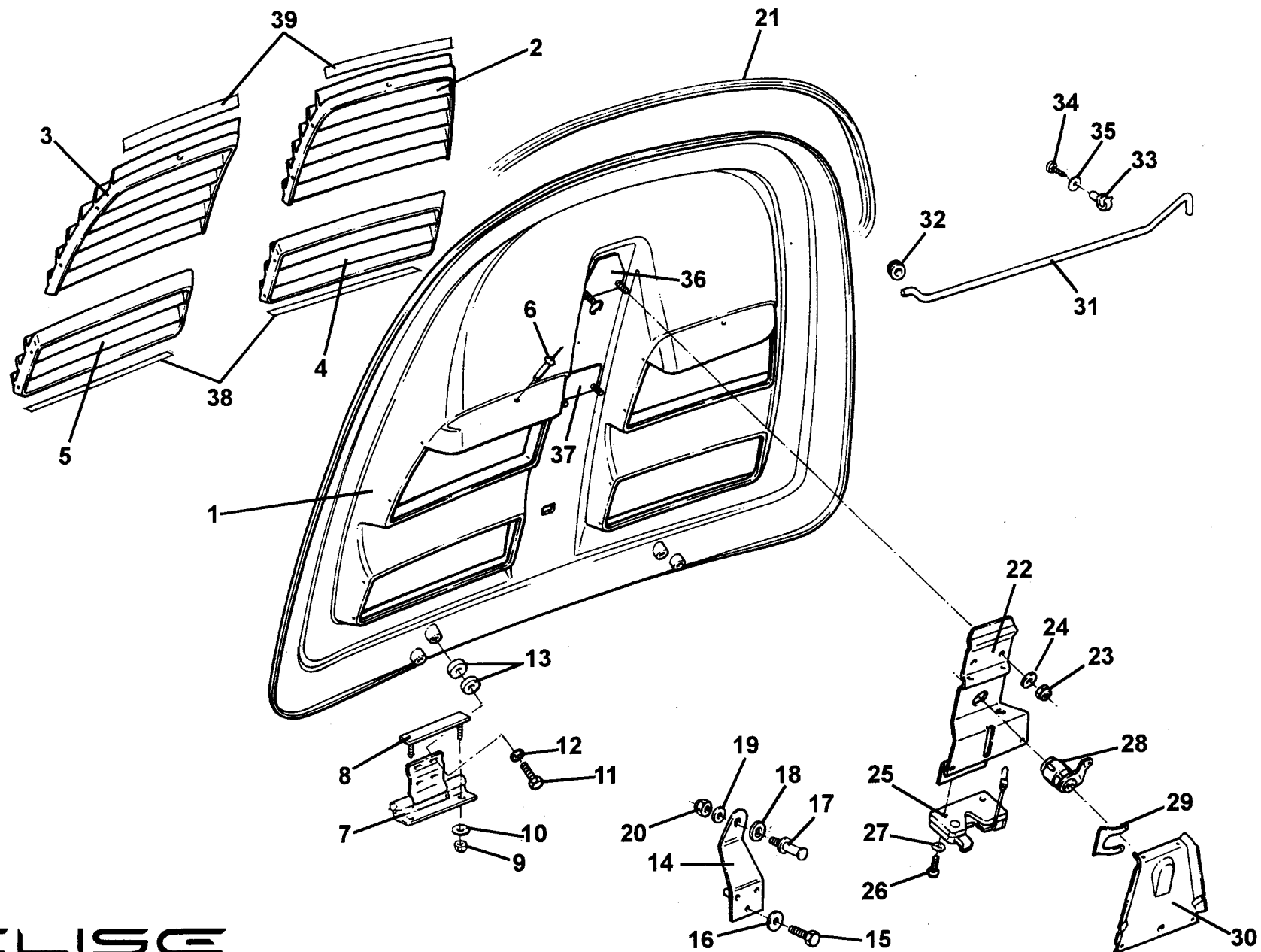


**ELISE**  
10.11

**Function Code 10.11 Engine Cover Lid & Release Mechanism**

<u>Dep</u>	<u>Part Description</u>	<u>Remarks</u>	<u>Option</u>	<u>Part Number</u>	<u>Qty</u>
19	Washer, flat, M6 x 12.1 x 1.4			A075W4013Z	1
20	Nyloc Nut, M6, pin to bracket			A907E6285F	1
21	Weatherseal, luggage compartment gutter			A089V6055F	1
22	Bracket, latch retention			A117B0053F	1
23	Nyloc Nut, M6, bracket to lid			A907E6285F	4
24	Washer, flat, M6 x 12.1 x 1.4			A075W4013Z	4
25	Latch Assembly			A117B6001F	1
26	Screw, M6 x 20, pan hd. pozi. latch to bracket	Black finish		A111W1150F	3
27	Washer, flat, M6 x 25 x 1.4, SS	Black finish		A082W4131F	3
28	Lock Barrel	Part of vehicle lock set, see 10.17		B117H0001F	1
29	Clip, barrel retention			A117B6009F	1
30	Cover, latch assembly			A117U0162F	1
31	Stay, lid supporting			A117B0244F	1
32	Grommet, stay to bulkhead			X036B6150Z	1
33	Retaining Clip, stay			A082W6325F	1
34	Screw, No.8 x 0.5", pan hd., pozi., clip fixing			A075W5034Z	1
35	Washer, flat, 3/16 x 1/2", blk.			A075W4063Z	1
36	Stud Plate, bracket fixing, rear			A117B0243F	1
37	Stud Plate, bracket fixing, front			A117B0242F	1
38	Double Sided Tape, 5mm, front edge of grilles to lid	Cut to fit		A117B0362V	As req.
39	Double Sided Tape, 19mm, rear edge of grilles to lid	Cut to fit		A117B0361V	As req.

**ELISE**



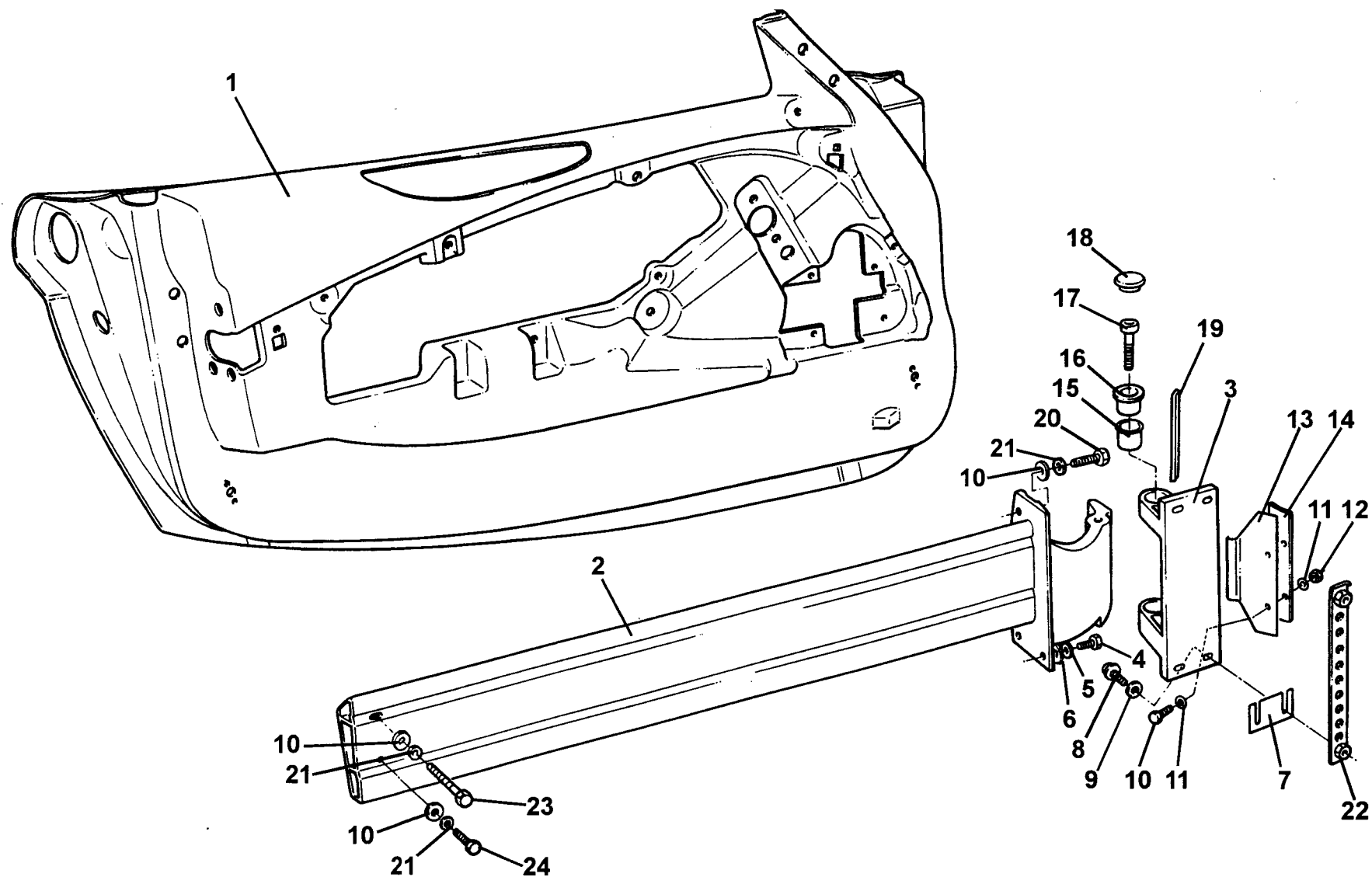
**ELISE**  
10.11

---

**Function Code 10.11 Engine Cover Lid & Release Mechanism**

<u>Dep</u>	<u>Part Description</u>	<u>Remarks</u>	<u>Option</u>	<u>Part Number</u>	<u>Qty</u>
40	Permabond A130	Not illustrated, used on screw item 25		A912E7133F	As req.

---



**ELISE**  
**10.15**



# Service Parts List **ELISE**

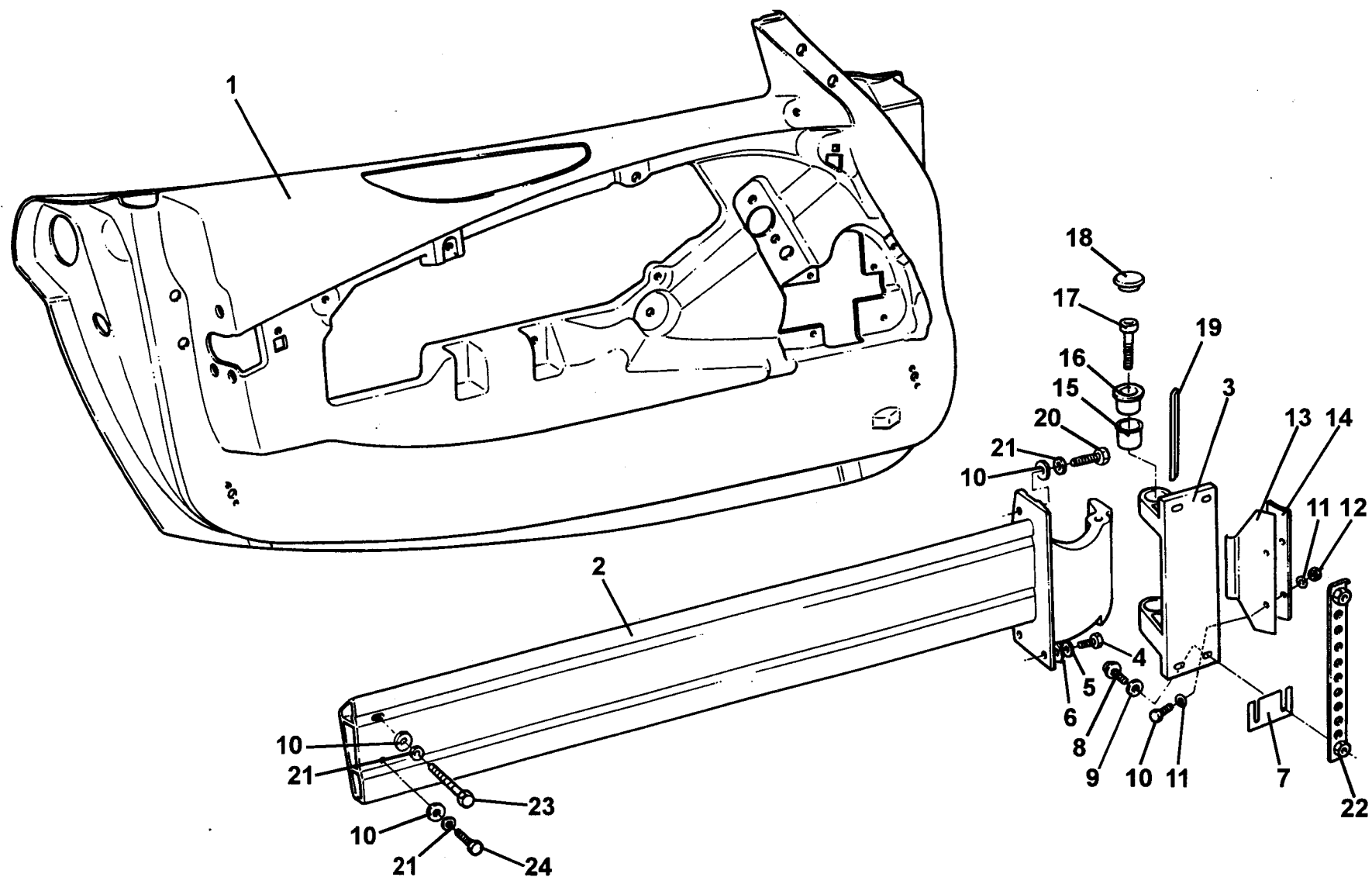


## Function Code 10.15 Door Shells, Beams, Hinges

<u>Dep</u>	<u>Part Description</u>	<u>Remarks</u>	<u>Option</u>	<u>Part Number</u>	<u>Qty</u>
01	Door Shell, LH			A117B0061K	1
01a	Door Shell, RH			A117B0060K	1
02	Door Beam, LH			A116U0029F	1
02a	Door Beam, RH			A116U0030F	1
03	Hinge, chassis to door beam			A111U0055F	2
04	Setscrew, M6 x 20, hex. hd., beam to door fix.			A075W1030Z	4
05	Washer, shakeproof, M6			A075W4046Z	4
06	Washer, flat, M6 x 1.5			A075W4015Z	4
07	Shim, door hinge, 1.0mm			A111B0316F	As req
07a	Shim, door hinge, 1.5mm			A111B0317F	As req
07b	Shim, door hinge, 2.0mm			B111B0314F	As req.
07c	Shim, door hinge, 3.0mm			B111B0315F	As req
08	Screw, M8 x 30, cap hd.			A089W7052F	8
09	Washer, flat, M8 x 16.6 x 1.4			A075W4020Z	18
10	Screw, M6 x M20, hex. hd.			A075W1030Z	4
11	Washer, flat, M6			A075W4013Z	8
12	Nut, M6, Nyloc			A075W3009Z	4
13	Spring Plate, door check			C116B0257F	2

**ELISE**

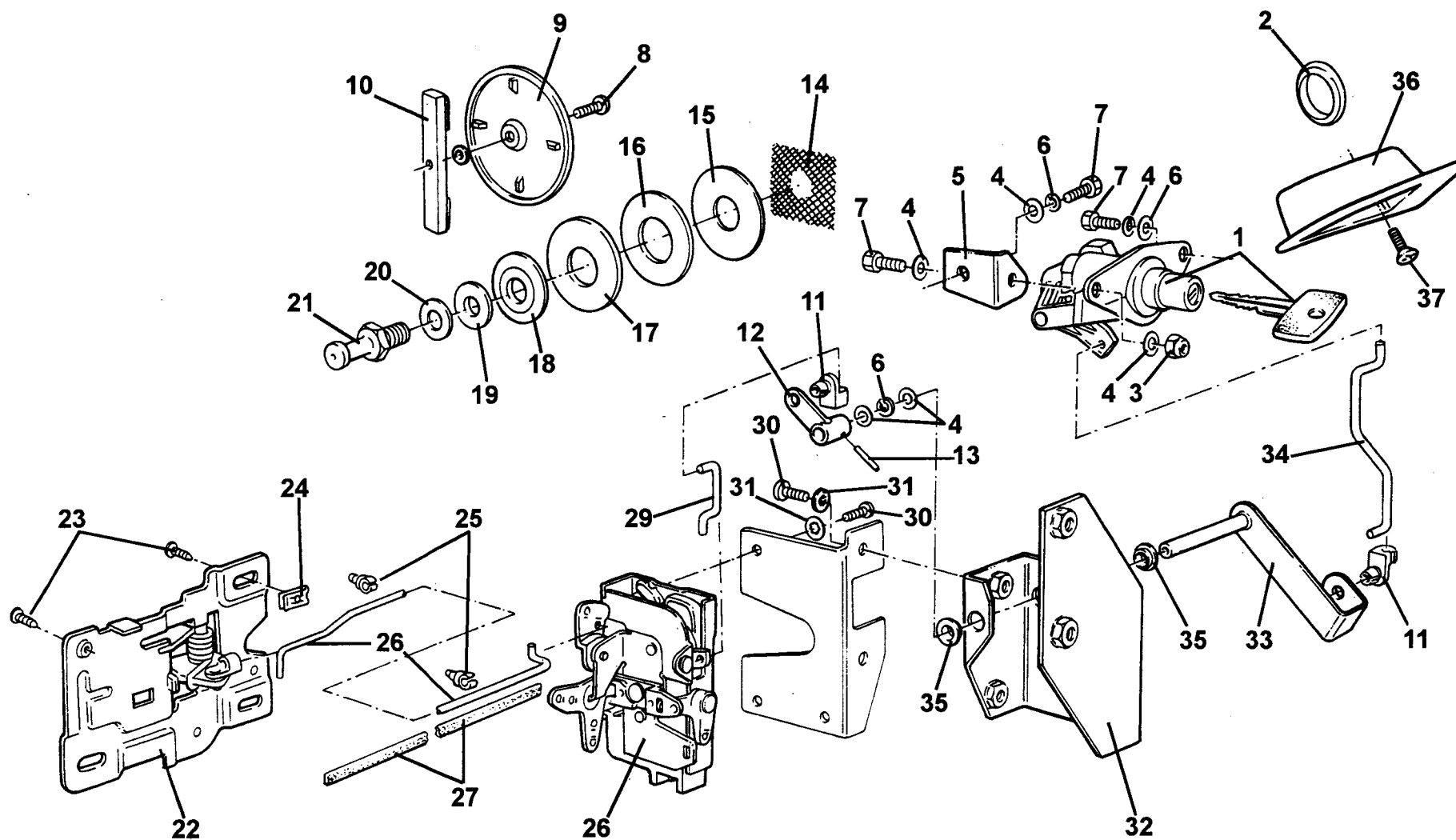
Function Code: 10.15, Page: 1



**ELISE**  
10.15

**Function Code 10.15 Door Shells, Beams, Hinges**

<u>Dep</u>	<u>Part Description</u>	<u>Remarks</u>	<u>Option</u>	<u>Part Number</u>	<u>Qty</u>
14	Support Plate, door check spring			C111B0175F	2
15	Bearing, door hinge			A111U6025F	4
16	Bush, door hinge			A111U0057F	4
17	Screw, M10 x 30, cap hd.			A075W7030F	4
18	Dust Cap, door hinge			A111U6024F	2
19	Door Stop Buffer Strip			B111B0178K	2
20	Setscrew, M8 x 20, hex. hd., beam to door fix.			A075W1038Z	4
21	Washer, shakeproof, M8			A075W4048Z	10
22	Nutplate, door hinges	Fitted in chassis		A111U0056F	4
23	Bolt, M8 x 45, hex,hd.,beam to rear bracket, upper			A075W2040Z	2
24	Setscrew, M8 x 25, hex. hd., beam to rear bracket, lower			A075W1039Z	2



**ELISE**  
10.17

# Service Parts List **ELISE**



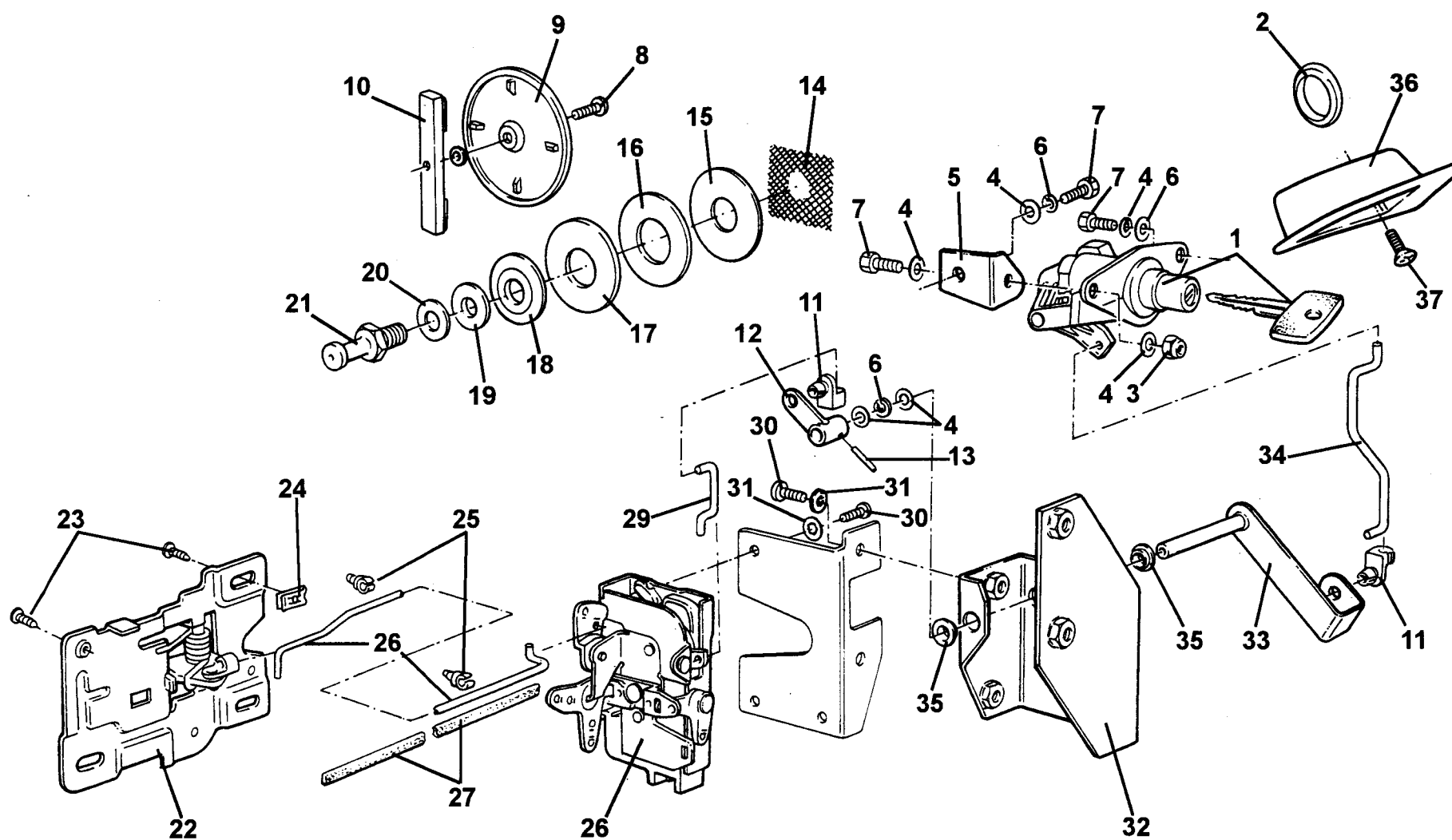
## Function Code 10.17 Door Latch Mechanism

<u>Dep</u>	<u>Part Description</u>	<u>Remarks</u>	<u>Option</u>	<u>Part Number</u>	<u>Qty</u>
01	Vehicle Lock Set, door, boot, steering, fuel cap + 2 keys			B117H0001F	1
02	Blanking Grommet, linkage access hole			A082B6057F	2
03	Nut, nyloc, M6, support brkt fix			A082B6057F	2
04	Washer, flat, M6 x 12.1 x 1.4, support brkt fix			A075W4013Z	12
05	Support Bracket, release button, LH			A117U0001F	1
05a	Support Bracket, release button, RH			A117U0002F	1
06	Washer, wavy, 0.25", support brkt. fix.			A075W4087F	6
07	Setscrew, M6 x 16, support brkt. fix.			A075W1028Z	6
08	Screw, M5 x 10, pozi, cover plate fix			A111W5223F	2
09	Cover Plate, mechanism access hole			B111U0094K	2
09a	Reflector/Cover	Replaces cover plate: item 9		A117M6026F	2
10	Fixing Strap, cover plate			A111U0095K	2
11	Nylon Clip, linkage retention			A082U6267F	4
12	Lever, door latch release			A111U0122F	2
13	Roll Pin, door latch lever to spindle retention			A111U6560F	2
14	Shim, expanded stainless, door striker attachment			A111U0215F	2
15	Shim, 2mm, door striker pin			A111U0220F	2
16	Shim, 4mm, door striker pin			A111U0219F	2

**ELISE**

Function Code: 10.17, Page: 1

2001 / 01



**ELISE**  
**10.17**

# Service Parts List **ELISE**



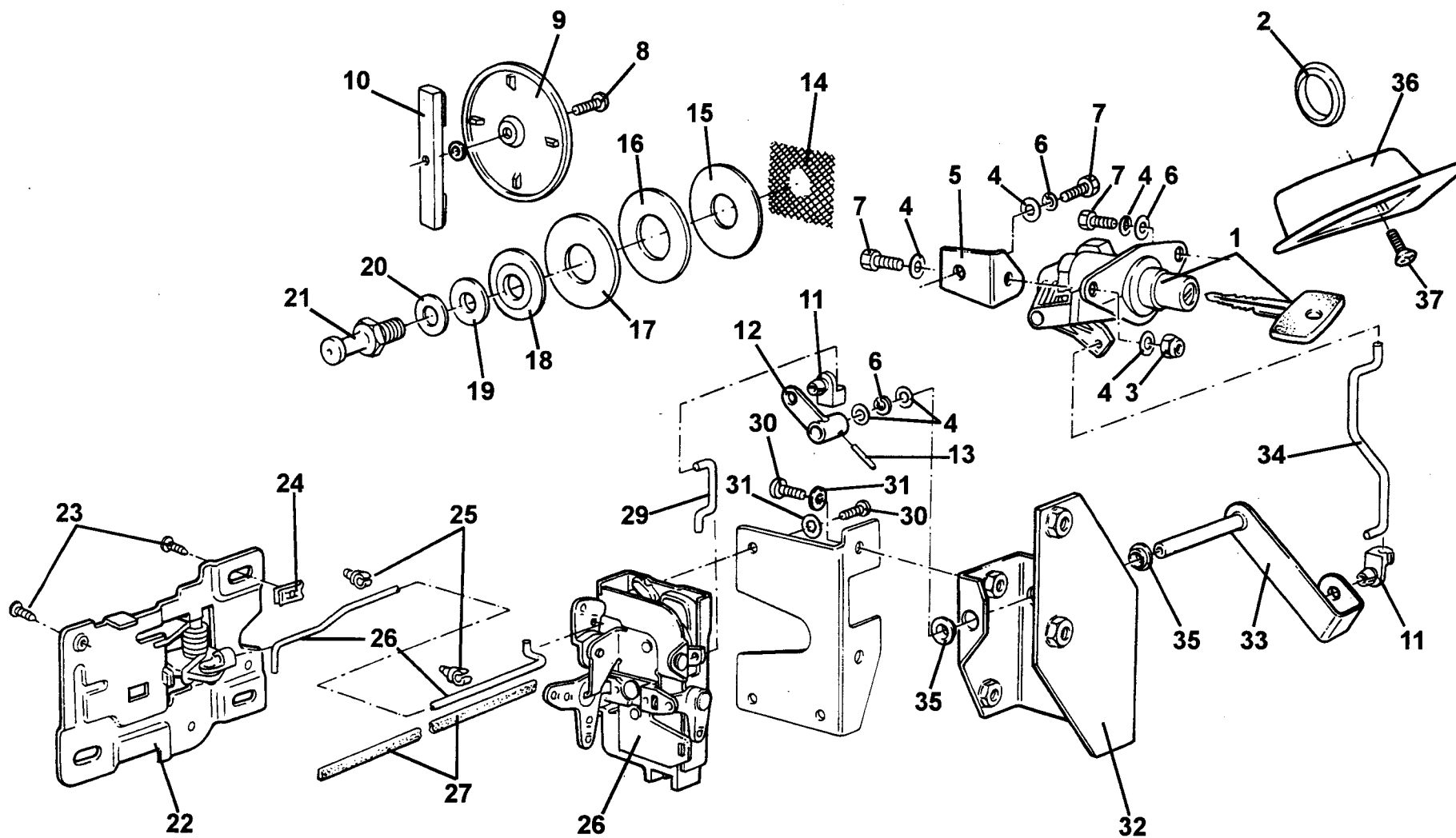
## Function Code 10.17 Door Latch Mechanism

<u>Dep</u>	<u>Part Description</u>	<u>Remarks</u>	<u>Option</u>	<u>Part Number</u>	<u>Qty</u>
01	Vehicle Lock Set, door, boot, steering, fuel cap + 2 keys			B117H0001F	1
02	Blanking Grommet, linkage access hole			A082B6057F	2
03	Nut, nyloc, M6, support brkt fix			A082B6057F	2
04	Washer, flat, M6 x 12.1 x 1.4, support brkt fix			A075W4013Z	12
05	Support Bracket, release button, LH			A117U0001F	1
05a	Support Bracket, release button, RH			A117U0002F	1
06	Washer, wavy, 0.25", support brkt. fix.			A075W4087F	6
07	Setscrew, M6 x 16, support brkt. fix.			A075W1028Z	6
08	Screw, M5 x 10, pozi, cover plate fix			A111W5223F	2
09	Cover Plate, mechanism access hole			B111U0094K	2
09a	Reflector/Cover	Replaces cover plate: item 9		A117M6026F	2
10	Fixing Strap, cover plate			A111U0095K	2
11	Nylon Clip, linkage retention			A082U6267F	4
12	Lever, door latch release			A111U0122F	2
13	Roll Pin, door latch lever to spindle retention			A111U6560F	2
14	Shim, expanded stainless, door striker attachment			A111U0215F	2
15	Shim, 2mm, door striker pin			A111U0220F	2
16	Shim, 4mm, door striker pin			A111U0219F	2

**ELISE**

Function Code: 10.17, Page: 1

2001 / 01

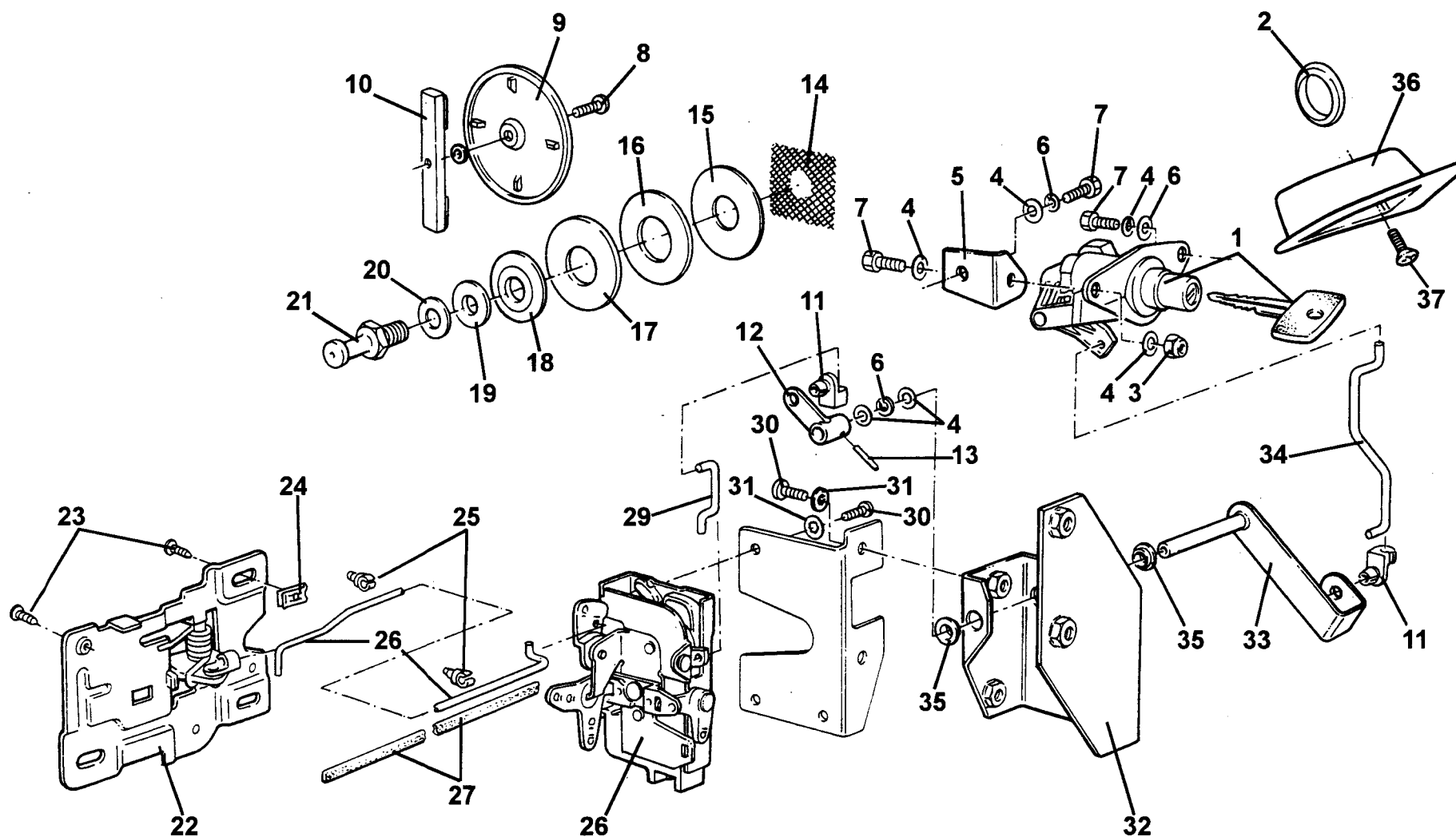


**ELISE**  
10.17



**Function Code 10.17 Door Latch Mechanism**

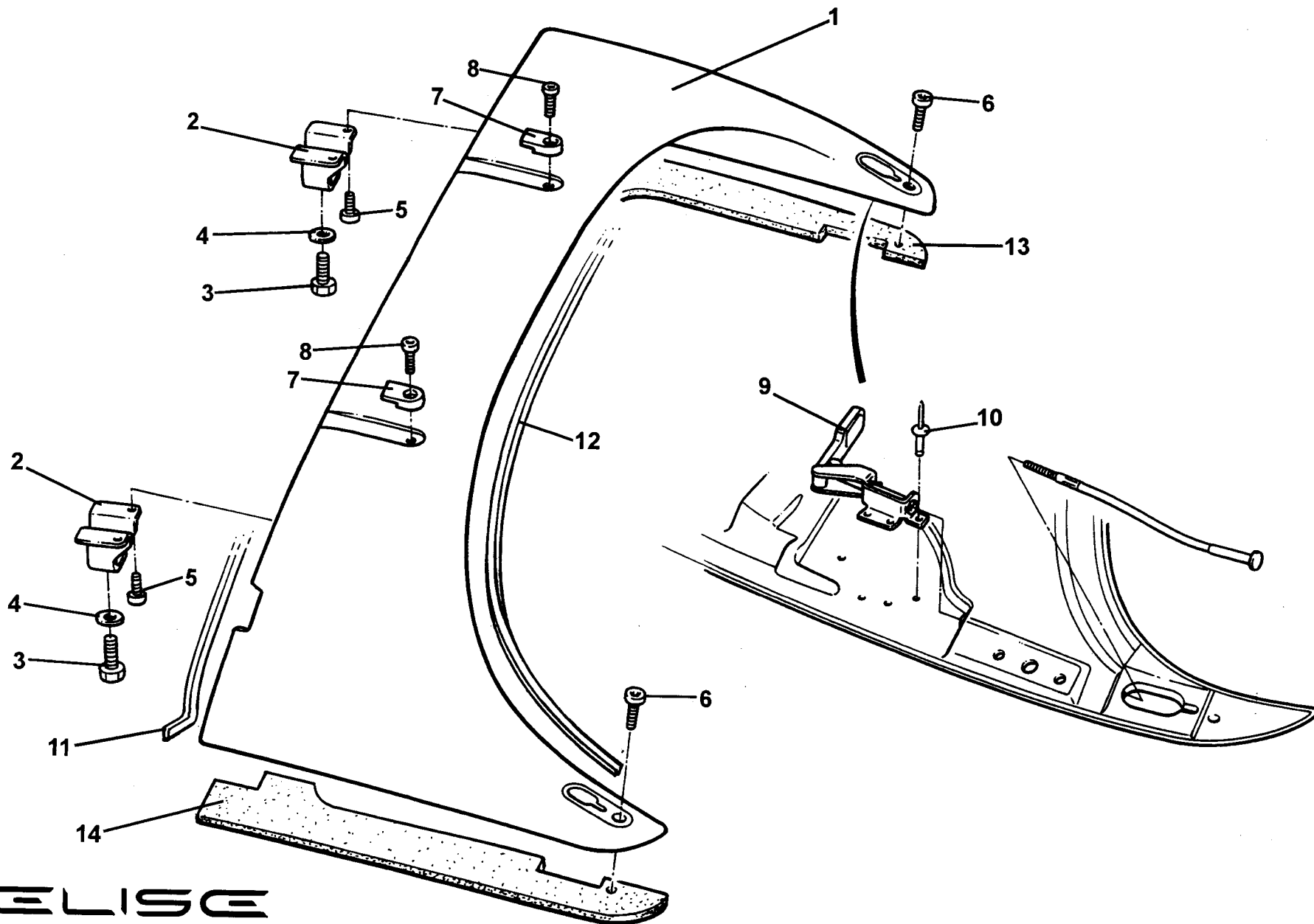
<u>Dep</u>	<u>Part Description</u>	<u>Remarks</u>	<u>Option</u>	<u>Part Number</u>	<u>Qty</u>
17	Front Collar, door striker pin			A111U0138F	2
18	Finisher, door striker pin			A111U0137K	2
19	Washer, striker			A111U0136F	2
20	Washer, flat, M12 x 24 x 1.6, door striker pin			A075W4071F	2
21	Striker Pin, door latch			A111U6003F	2
22	Release, door latch, interior, LH			A111U6005F	1
22a	Release, door latch, interior, RH			A111U6004F	1
23	Screw, No. 8 x 3/4", pozi., door release fix.			A075W5074Z	6
24	Spire Nut, No 8 captive, door release fix.			A075W6016Z	4
25	Plastic Clip, interior release rod guide			A075J6027Z	4
26	Rod, interior release to latch, LH			B117U0137F	1
26a	Rod, interior release to latch, RH			B117U0138F	1
27	Foam Strip, 19 x 3mm			A082U6067F	As req.
28	Latch mechanism, LH			A111U0389S	1
28a	Latch mechanism, RH			A111U0388S	1
29	Rod, latch to lever assy.			A111U0134F	2
30	Screw, M6 x 12, pozi., door latch/ bracket fix.			A111W5214F	10
31	Washer, shakeproof, M6, door latch fix.			A075W4046Z	6
32	Bracket, door beam attachment, LH			A111U0069F	1
32a	Bracket, door beam attachment, RH			A111U0068F	1
33	Spindle/Lever, door latch release, LH			C111U0121F	1



**ELISE**  
10.17

**Function Code 10.17 Door Latch Mechanism**

<u>Dep</u>	<u>Part Description</u>	<u>Remarks</u>	<u>Option</u>	<u>Part Number</u>	<u>Qty</u>
33a	Spindle/Lever, door latch release, RH			C111U0120F	1
34	Rod, latch to release button			A117U0003F	2
35	Bush, lever/spindle assy.			A111U6018F	4
36	Door Pull, exterior, LH			C117B0135F	1
36a	Door Pull, exterior, RH			C117B0136F	1
37	Screw, M4 x 16, csk, pozi, exterior door pull fix.			A100W5033F	4



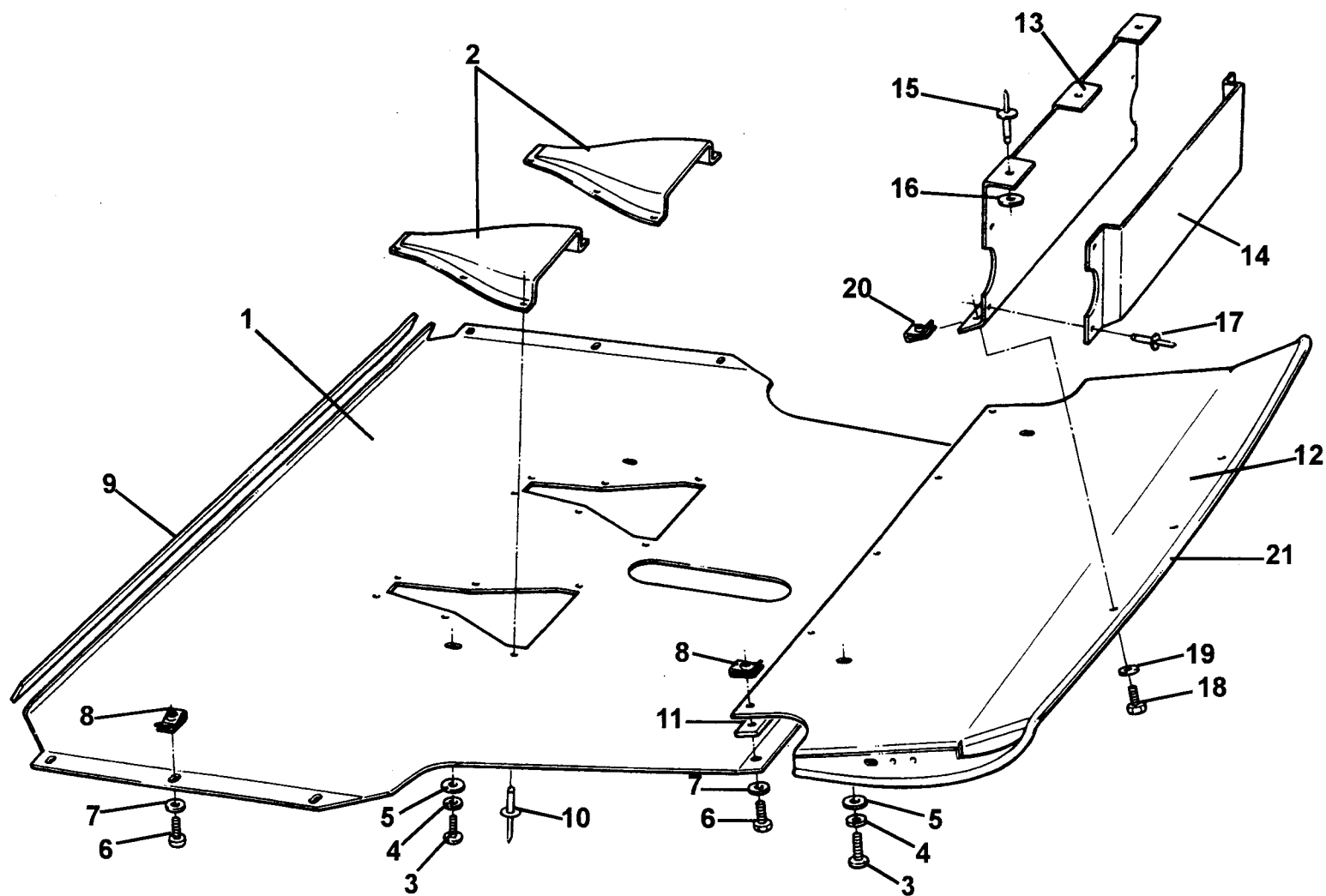
**ELISE**  
10.20

# Service Parts List **ELISE**



## Function Code 10.20 Rear Window Shroud & Fixings

<u>Dep</u>	<u>Part Description</u>	<u>Remarks</u>	<u>Option</u>	<u>Part Number</u>	<u>Qty</u>
01	Rear Window Shroud Assembly	Includes all fittings etc.		B117B0088F	1
02	Bracket, shroud to bulkhead			A117B0091F	2
03	Screw, 0.5"UNF x 1.5", hex. hd., bracket to bulkhead			A075W1020Z	2
04	Washer, flat, M6 x 18 x 1, bracket to bulkhead			B082W4018F	2
05	Screw, M4 x 8, cap hd., bracket to shroud			A117B0208H	4
06	Screw, M6 x 25, cap hd., shroud to clamshell			A111W7170F	2
07	Keeper Plate, rear of hood stays			A117B0084F	2
08	Screw, M4 x 10, cap hd., keeper to shroud			A117B0207H	2
09	Tensioner Assembly, soft top tail, RH			A117B0206F	1
09a	Tensioner Assembly, soft top tail, LH			A117B0205F	1
10	Pop Rivet, lever assy. to shroud			A075W6070Z	6
11	Edge Finisher, front edge of shroud	Cut to fit		A111U6034V	As req.
12	Edge Finisher, rear edge of shroud	Cut to fit		A117B6010V	As req.
13	Foam Gasket, RH, shroud to clamshell			A117B	1
14	Foam Gasket, LH, shroud to clamshell			A117B	1



**ELISE**

**10.25**

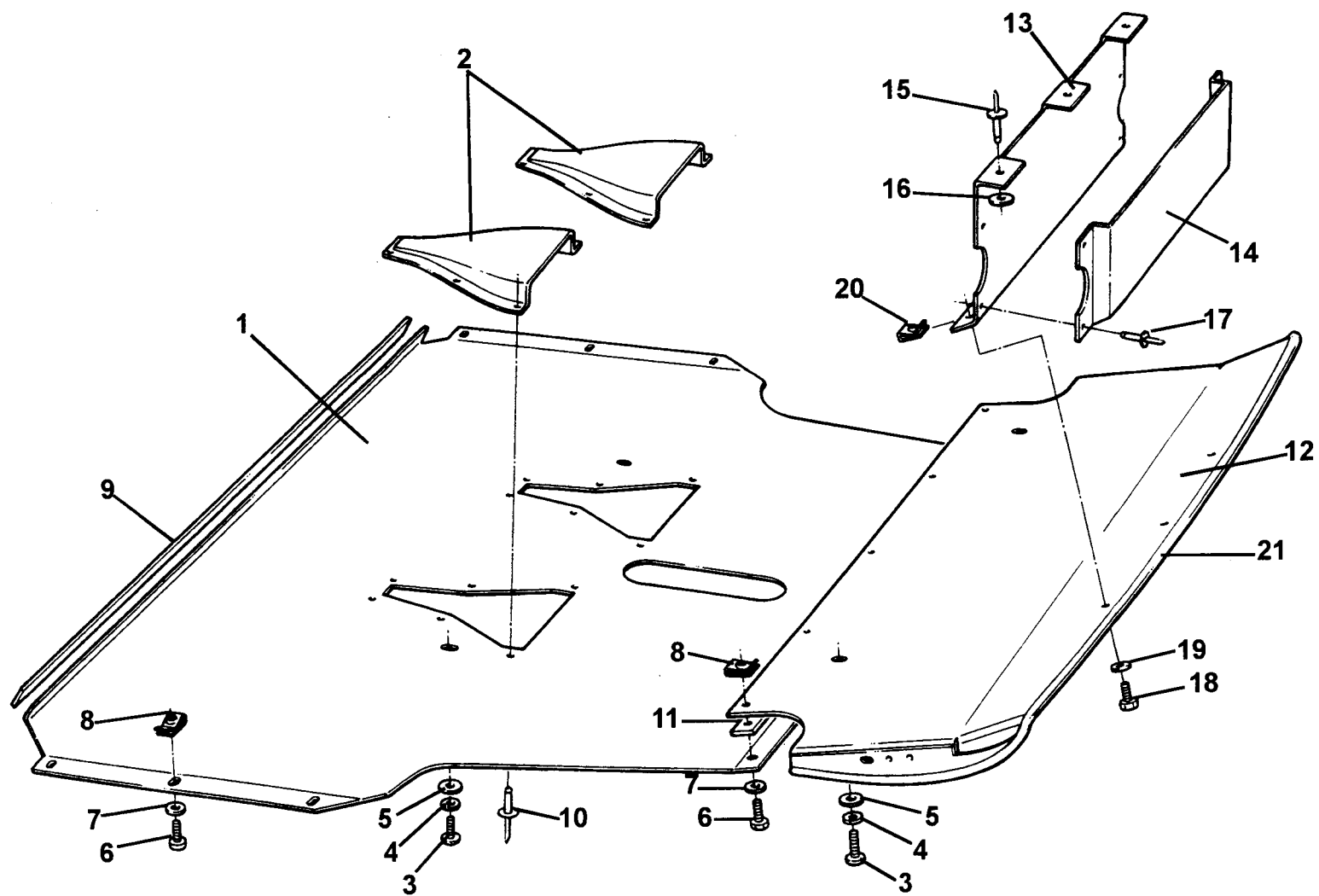
# Service Parts List **ELISE**



## Function Code 10.25 Undertray & Diffuser

<u>Dep</u>	<u>Part Description</u>	<u>Remarks</u>	<u>Option</u>	<u>Part Number</u>	<u>Qty</u>
01	Undertray	Without NACA ducts		A117A0036F	1
01a	Undertray Assembly	With NACA ducts		A117A0056J	1
02	NACA Duct	Part of item 1		A111A0218K	2
03	Screw, M8 x 25, button hd.			A111W7175F	4
04	Washer, spring, M8			A075W4036Z	4
05	Washer, flat, M8 x 25 x 1.4 mm			A075W4021Z	4
06	Screw, M5 x 16, hex. hd.			A111W1163F	11
07	Washer, flat, M5 x 25 mm x 1.4			A082W4098F	11
08	Spire Nut, M5			B100W6372F	11
09	Foam Strip, self adhesive, 10mm x 6mm			A100B0431V	As req.
10	Pop Rivet, NACA duct fix.			A075W6065Z	12
11	Foam Strip, self adhesive, 19mm x 3mm			A082U6067F	3
12	Diffuser			A117A0102J	1
13	Support Plate, diffuser			A117B0270F	1
14	Panel, license plate mounting			A117B0271F	1
15	Pop Rivet, plate to clamshell			A089W6397F	3
16	Washer, flat, 3/16" x 0.75"			B075W4009Z	3
17	Pop Rivet, domed. black, license plate panel to plate			A082W6512F	3

**ELISE**



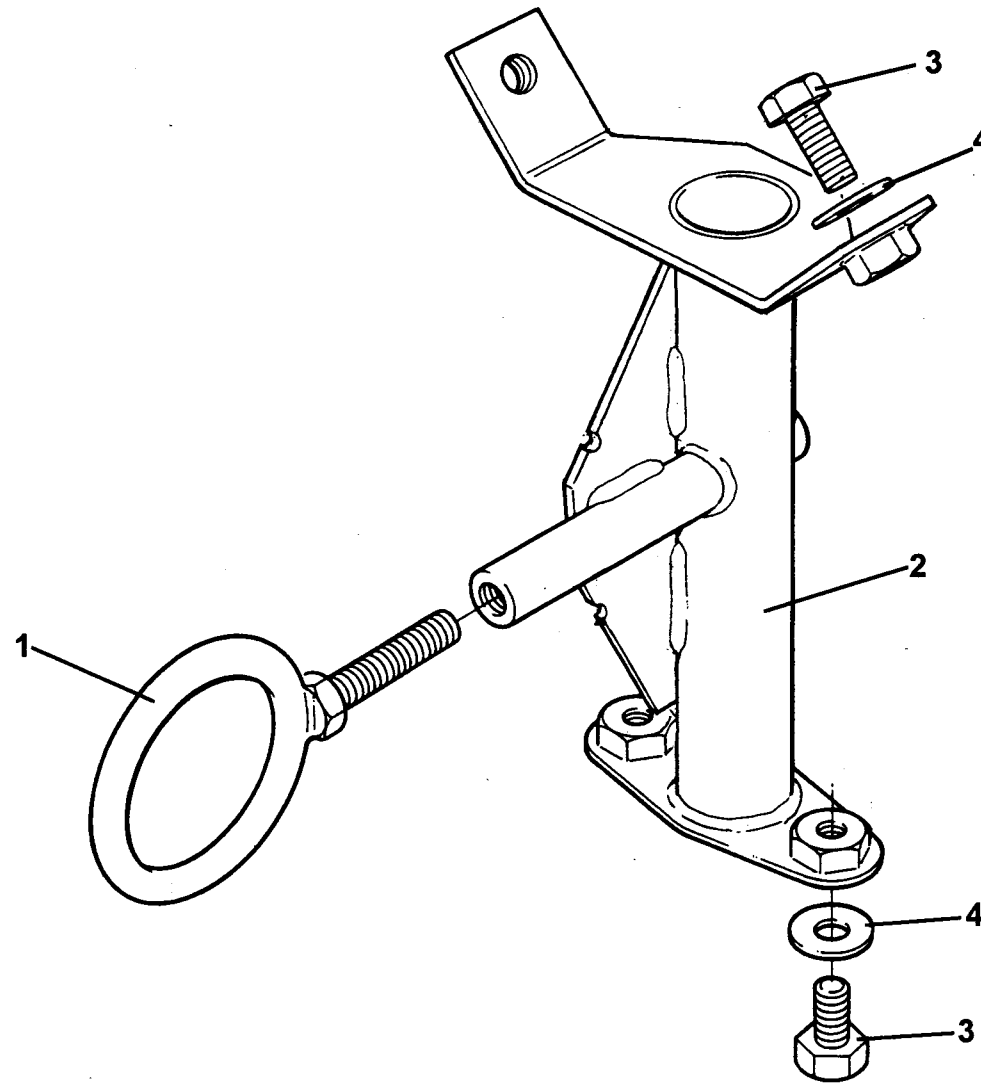
**ELISE**  
10.25



---

**Function Code 10.25 Undertray & Diffuser**

<u>Dep</u>	<u>Part Description</u>	<u>Remarks</u>	<u>Option</u>	<u>Part Number</u>	<u>Qty</u>
18	Screw, M5 x 16, hex. hd. SS, diffuser to plate			A111W1163F	3
19	Washer, flat, 3/16 x 0.75, SS			B075W4009Z	3
20	Spirenut, M5			B100W6372F	3
21	Edging Strip. diffuser			A117A0050V	As req.



**ELISE**  
10.31

# Service Parts List **ELISE**



## Function Code 10.31 Towing Strut/ Hook

<u>Dep</u>	<u>Part Description</u>	<u>Remarks</u>	<u>Option</u>	<u>Part Number</u>	<u>Qty</u>
01	Towing Eye			A111B6087F	1
02	Mounting Strut, towing eye			A117B0160F	1
03	Setscrew, M8 x 16, hex. hd., grade 8.8 Zn			A075W1036Z	4
04	Washer, flat, M8 x 1.4 Zn			A075W4021Z	4